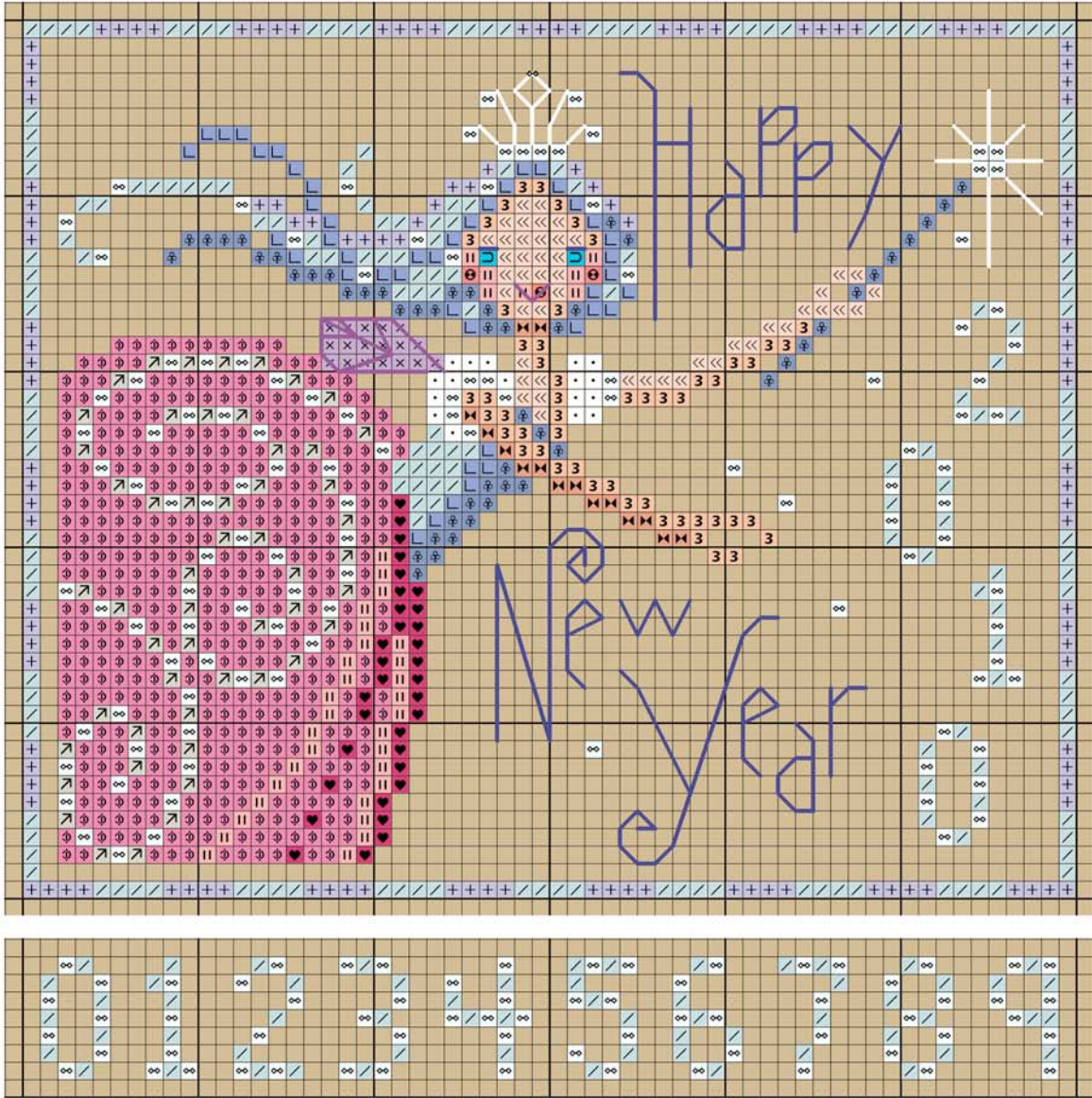


New Year's Magic

Complimentary Cross Stitch Design by Brooke Nolan



Copyright © 2010 Brooke's Books Publishing

Symbol	DMC	Color
•	5200	Snow White
↗	3072	Beaver Gray Vy Lt
/	775	Baby Blue Vy Lt
+	3747	Blue Violet Vy Lt
L	341	Blue Violet Lt
⊗	794	Cornflower Blue Lt
x	211	Lavender Lt
<<	948	Peach Vy Lt
3	754	Peach Lt
⊞	758	Terra Cotta Vy Lt
⊞	761	Salmon Lt
⊞	760	Salmon
⊞	604	Cranberry Lt
♥	602	Cranberry Md
D	3845	Bright Turquoise

Cross Stitch & Bead: Use 2 plies of floss on 14 count fabric over 1 thread or 28 count fabric over 2 threads.

Use the numbers to personalize the year.

(To thread the beading needle, put 1 strand of floss through the eye and pull the end down so there are 2 working strands.)

Note: Stitch an extra MH #02010 bead on the tip top of her tiara.

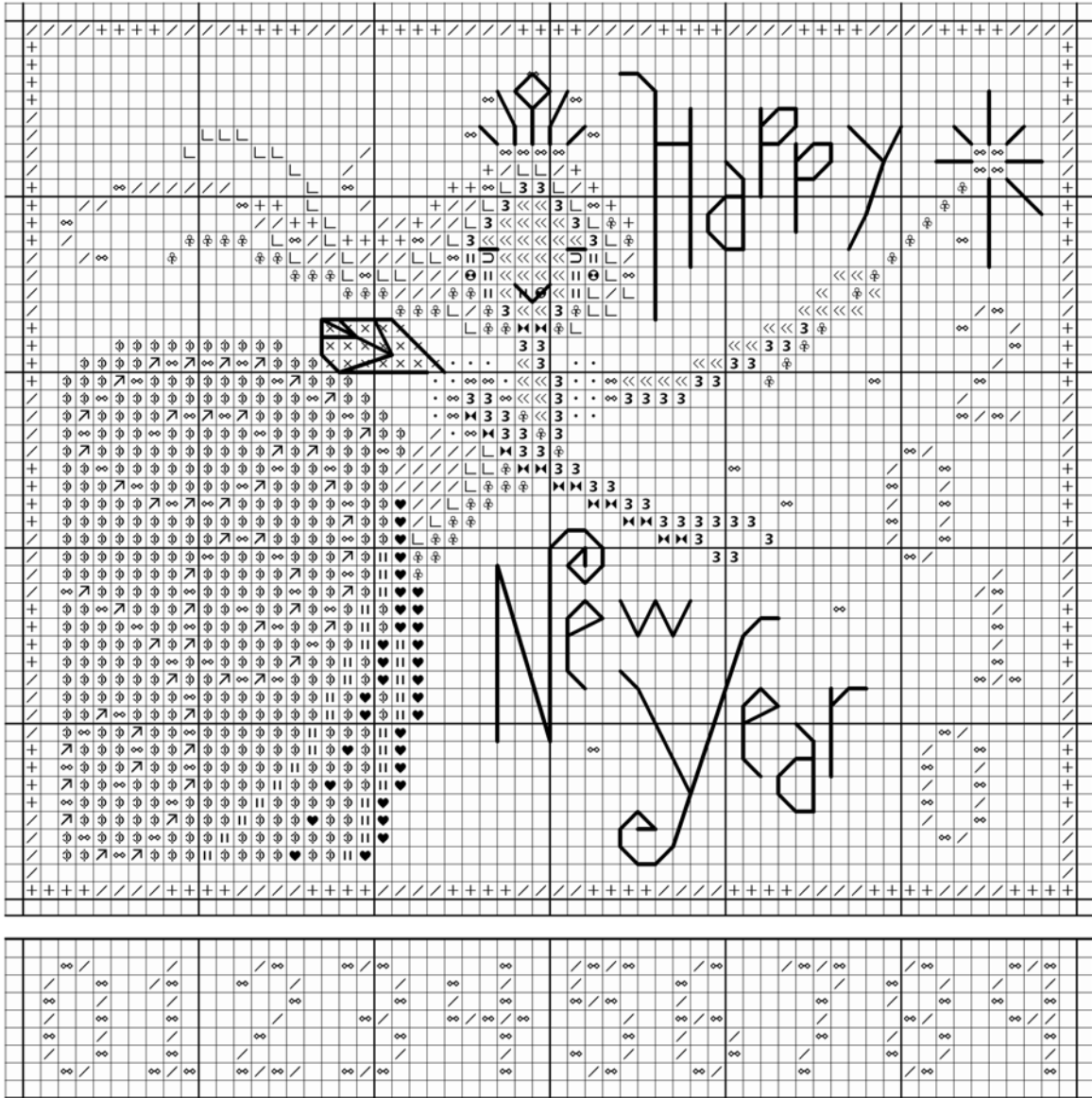
Back Stitch: 1 ply DMC 792 = The words, "Happy New Year" and eyelashes; 1 ply DMC 5200 = Tiara and rays from the wand; 1 ply DMC 553 = Mouth and wing

Symbol	Mill Hill	Color	DMC
∞	02010	Quick Silver	5200

60 x 40 stitches

New Year's Magic

Complimentary Cross Stitch Design by Brooke Nolan



Copyright © 2010 Brooke's Books Publishing

Symbol	DMC	Color
•	5200	Snow White
↗	3072	Beaver Gray Vy Lt
/	775	Baby Blue Vy Lt
+	3747	Blue Violet Vy Lt
L	341	Blue Violet Lt
⊗	794	Cornflower Blue Lt
X	211	Lavender Lt
<<	948	Peach Vy Lt
3	754	Peach Lt
⊠	758	Terra Cotta Vy Lt
	761	Salmon Lt
⊕	760	Salmon
⊖	604	Cranberry Lt
♥	602	Cranberry Md
⊂	3845	Bright Turquoise

Cross Stitch & Bead: Use 2 plies of floss on 14 count fabric over 1 thread or 28 count fabric over 2 threads.

Use the numbers to personalize the year.

(To thread the beading needle, put 1 strand of floss through the eye and pull the end down so there are 2 working strands.)

Note: Stitch an extra MH #02010 bead on the tip top of her tiara.

Back Stitch: 1 ply DMC 792 = The words, "Happy New Year" and eyelashes; 1 ply DMC 5200 = Tiara and rays from the wand; 1 ply DMC 553 = Mouth and wing

Symbol	Mill Hill	Color	DMC
∞	02010	Quick Silver	5200

60 x 40 stitches